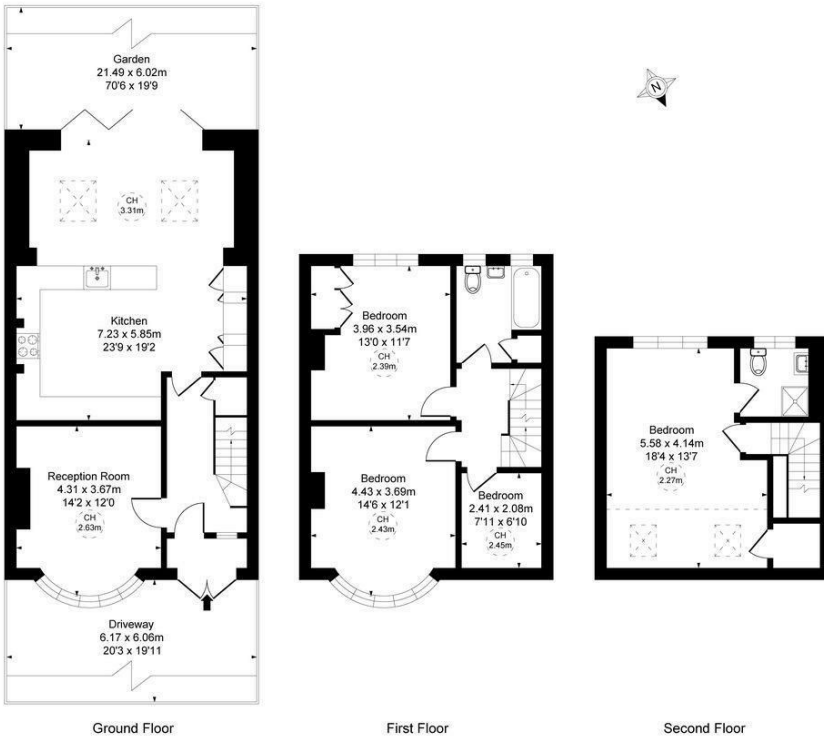


Arthur Road Motspur Park, KT3 6LX

£925,000 Freehold



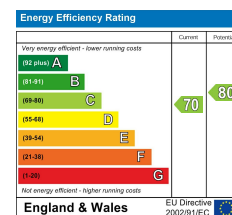
Arthur Road Motspur Park, KT3
 Approximate Gross Internal Area
138.36 sq m / 1506 sq ft
 (Excluding restricted height
 under 1.5m / 50.29 sq m / 1402 ft)
 (CH = Ceiling Heights)



This plan is not to scale. It is for guidance and not for valuation purposes.
 All measurements and areas are approximate only, and have been prepared in accordance with the current edition of the RICS Code of Measuring Practice.



- Four Bedroom - Two Bathroom - 1,506 sqft
- 1930's Mid-Terrace House
- 0.1 Miles To Motspur Park Station And Shops
- Impressive 70'ft South West Facing Garden
- Gorgeous Extended Kitchen/Dining Room With Bifold Doors
- Extended Principal Bedroom With En Suite Shower Room
- Off-Street Parking To Front
- Desirable Residential Road
- EPC - C
- Council Tax Band - E



For Free Mortgage Quote and Best Mortgage Rates, call Ellisons Mortgage Advisor on 0208 944 9595



Although these particulars are believed to be correct, their accuracy is not guaranteed and they do not form part of any contract.

Celebrating 30 years of successful Sales and Lettings in Merton

